



70-294

**Planning, Implementing, and Maintaining a Windows Server
2003 AD Infrastructure**

Q&A

DEMO Version

Important Note Please Read Carefully

For demonstration purpose only, this free version Chinatag study guide contains **10** full length questions selected from our full version products which have more than **200** questions each.

This Study guide has been carefully written and compiled by Chinatag certification experts. It is designed to help you learn the concepts behind the questions rather than be a strict memorization tool. Repeated readings will increase your comprehension.

For promotion purposes, all PDF files are **not** encrypted. Feel free to distribute copies among your friends and let them know Chinatag website.

Study Tips

This product will provide you questions and answers along with detailed explanations carefully compiled and written by our experts. Try to understand the concepts behind the questions instead of cramming the questions. Go through the entire document at least twice so that you make sure that you are not missing anything.

Latest Version

We are constantly reviewing our products. New material is added and old material is revised. Free updates are available for 90 days after the purchase. You should check the products page on the <http://www.chinatag.com> website for an update 3-4 days before the scheduled exam date.

Please tell us what you think of our products. We appreciate both positive and critical comments as your feedback helps us improve future versions. Feedback on specific questions should be send to feedback@chinatag.com.

Thanks for purchasing our products and look forward to supplying you with all your Certification training needs.

Good studying!

Technical and Support Team
Chinatag LLC.

QUESTION 1

You have a single Active Directory directory service forest named contoso.com. You create baseline security settings for a group of computers, and you store the settings in a database. You deploy the baseline security settings. You need to confirm that the security settings on one of the computers are applied correctly. What are two possible commands that you can run to achieve this goal? (Each correct answer presents a complete solution. Choose two.)

- A. secedit
- B. gpupdate
- C. netdom
- D. scwcmd

Answer: AD

QUESTION 2

Your company has a single Active Directory directory service domain that includes a main office and two branch offices. Each branch office has its own Active Directory site. All user accounts are placed into organizational units (OUs) based on department. Multiple Group Policy objects (GPOs) are linked at the domain, the site, and the OU levels. A user in Atlanta transfers to a different branch office and joins a different department. You move her user account into the corresponding OU. After logging on to her new client computer, the user notices that the desktop settings are different from the settings she had in her previous location. You need to find out the effect of all GPOs on the user. What should you do?

- A. Use the Security Configuration and Analysis snap-in.
- B. Use the Resultant Set of Policy snap-in.
- C. Run the Secedit /analyze command.
- D. Run the Secedit /validate command.

Answer: B

QUESTION 3

You have a single Active Directory directory service domain. All users in the IT department are placed into an organizational unit (OU) named IT Users. A Group Policy object (GPO) is linked to the IT Users OU. The GPO assigns a software installation package to install the Windows Server 2003 Administration Tools Pack. You select the Install this application at logon option in the software installation package. A user has been removed from the IT Users OU, but she still has the Windows Server Administration Tools Pack on her computer. You need to ensure that the Windows Server 2003 Administration Tools Pack is removed from a user's computer when the user is moved from the IT Users OU. What should you do?

- A. Modify the software installation package to use the Published deployment method. Clear the Auto-install this application by file extension activation check box. Redeploy the software installation package.
- B. Modify the software installation package to clear the Install this application at logon option. Redeploy the software installation package.
- C. Modify the software installation package to select the Uninstall this application when it falls out of the scope of management option. Retain the software installation package in the GPO.
- D. Modify the software installation package to select the Uninstall this application when it falls out of the scope of management option. Delete the software installation package from the GPO.

Answer: C

QUESTION 4

You have a single Active Directory directory service domain. You use Group Policy to assign applications. A computer named Desktop1 must be moved to a different organizational unit (OU). You need to ascertain the effect that the move will have on the applications that are assigned to the computer account. What

should you do?

- A. Use the RSoP tool in logging mode on Desktop1.
- B. Use the RSoP tool in planning mode on Desktop1.
- C. Use the RSoP tool in logging mode on a domain controller.
- D. Use the RSoP tool in planning mode on a domain controller.

Answer: D

QUESTION 5

You are the network administrator for Contoso, Ltd. The network consists of a single Active Directory forest that contains a single domain named contoso.com. You have a user account named CONTOSO\admin that is a member of the Domain Admins global group. You need to create a new child domain named NA.contoso.com in the forest. You install a stand-alone Windows Server 2003 computer named DC3. You use the Active Directory Installation Wizard to promote DC3 to a domain controller in the new domain. You choose to create a domain controller for a new child domain in an existing domain tree.

You enter the user name and password for CONTOSO\admin. You choose contoso.com as the parent domain, and you type NA as the name of the child domain. You receive the error message shown in the exhibit. (Click the Exhibit button.) You need to be able to create the new child domain. What should you do?



- A. Enter the network credentials for a member of the local Administrators group.
- B. Add DC3 to the contoso.com domain and then run the Active Directory Installation Wizard.
- C. Enter the network credentials for a member of the Enterprise Admins group for the contoso.com forest.
- D. Enter the network credentials for a member of the Schema Admins group for the contoso.com forest.

Answer: C

QUESTION 6

You have a single Active Directory directory service domain. You back up your domain controllers on a nightly basis. You perform Group Policy backups on a nightly basis. A Group Policy object (GPO) is

accidentally deleted. You need to restore the GPO. What should you do?

- A. Perform a nonauthoritative restore of the Active Directory database.
- B. Perform an authoritative restore of the Active Directory database.
- C. Select the Import Policy option in the Group Policy Object Editor.
- D. Restore the GPO by using the Group Policy Management Console.

Answer: D

QUESTION 7

You have a single Active Directory directory service domain. You back up your domain controllers on a nightly basis. An organizational unit (OU) is accidentally deleted.

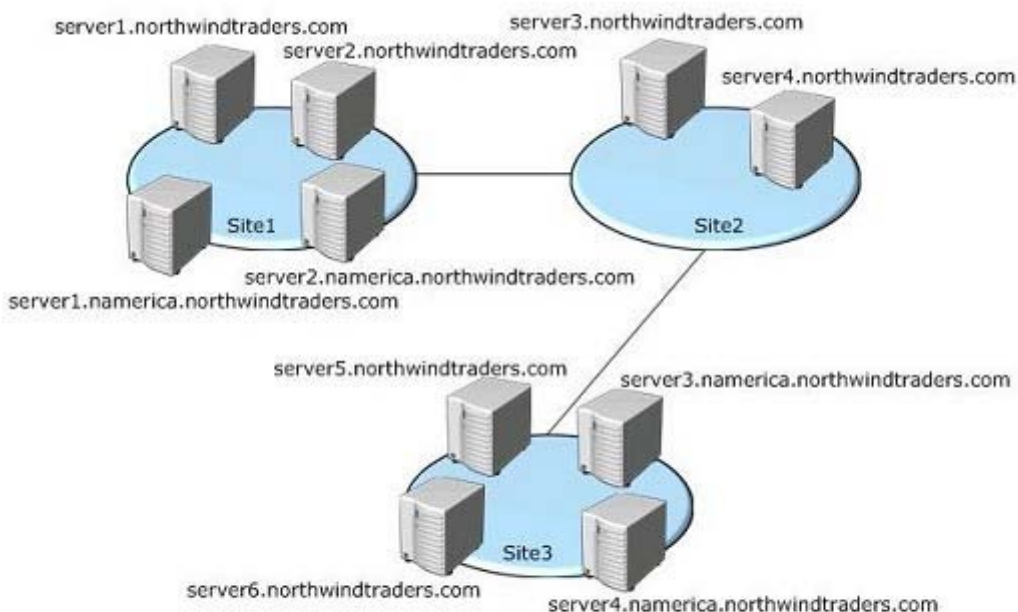
You need to restore the objects that were located in the OU. What should you do?

- A. Perform a nonauthoritative restore of the domain controller.
- B. Perform an authoritative restore of the domain controller.
- C. Restore the system state data on the domain controller.
- D. Restore the system volume on the domain controller.

Answer: B

QUESTION 8

You are the network administrator for Northwind Traders. The network consists of a single Active Directory forest that contains one root domain and one child domain. The forest also contains three separate sites, as shown in the Network Diagram exhibit. (Click the Exhibit button.) The network is not fully routed and there is no direct physical connection between Site1 and Site3. Site links are not bridged. You discover that the domain controllers for `namerica.northwindtraders.com` located in Site1 have additional accounts that are not on the domain controllers for `namerica.northwindtraders.com` located in Site3. You examine the directory service log in Event Viewer on a domain controller for `namerica.northwindtraders.com`. You discover the error message shown in the Error Message exhibit. (Click the Exhibit button.) You need to resolve the condition that is causing this error. What should you do?



Event ID: 1311

Source: NTDS KCC

Category: Knowledge Consistency Checker

Event Type: Error

User: NT AUTHORITY\ANONYMOUS LOGON

Computer: Server1

Description: The Directory Service consistency checker has determined that there is not enough physical connectivity published via the Active Directory Sites and Services Manager to create a spanning tree connecting all the sites connecting the Naming Context DC=namerica,DC=northwindtraders,DC=com

- A. Add a domain controller for the namerica.northwindtraders.com domain to Site2.
- B. Configure a site link bridge between the site links for Site1 and Site3.
- C. Configure at least one domain controller in each site to be a global catalog server.
- D. Create a site link between Site1 and Site3.

Answer: B

QUESTION 9

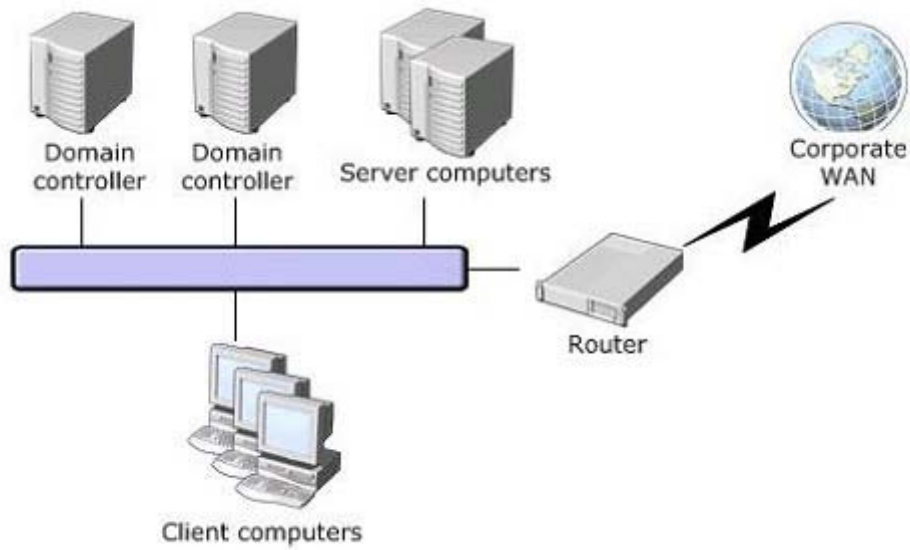
You have a single Active Directory directory service domain. You have an application that adds Active Directory Schema attributes during installation. The attributes replicate as part of global catalog replication. Your user account is a member of the Domain Admins, Schema Admins, and Enterprise Admins global groups. You test the application and decide not to deploy it to production. You need to ensure that the attributes that are added by the application are no longer available in Active Directory. Using the Active Directory Schema snap-in, what should you do?

- A. Clear the Index this attribute in the Active Directory option for each attribute that is added by the application.
- B. Clear the Attribute is active option for each attribute that is added by the application.
- C. Clear the Replicate this attribute to the Global Catalog option for each attribute that is added by the application.
- D. Clear the Allow this attribute to be shown in advanced view option for each attribute that is added by the application.

Answer: B

QUESTION 10

You are a network administrator for your company. The network consists of a single Active Directory domain. The company has offices in 25 cities. Each office is configured as a single site. You are responsible for one site that is configured as shown in the exhibit. (Click the Exhibit button.) An IP site link connects your site and the site at the company's main office. The company replaces your router with a firewall device. The firewall is configured to allow HTTP, SMTP, FTP, NNTP, global catalog queries, and VPN packets to pass. You discover that replication with other sites is not occurring. You need to ensure that you can replicate with other sites. You need to achieve this goal without removing or reconfiguring the firewall. What should you do?



- A. Create a new SMTP site link between your site and each of the other sites.
- B. Configure one domain controller in your site as a global catalog server.
- C. Configure both domain controllers in your site to use a fixed port when replicating.
- D. Create a VPN between your site and the site at the main office.

Answer: D