



70-292

**Managing and Maintaining a Microsoft Windows Server 2003
Environment for an MCSA Certified on Windows 2000**

Q&A

DEMO Version

Important Note Please Read Carefully

For demonstration purpose only, this free version Chinatag study guide contains **10** full length questions selected from our full version products which have more than **200** questions each.

This Study guide has been carefully written and compiled by Chinatag certification experts. It is designed to help you learn the concepts behind the questions rather than be a strict memorization tool. Repeated readings will increase your comprehension.

For promotion purposes, all PDF files are **not** encrypted. Feel free to distribute copies among your friends and let them know Chinatag website.

Study Tips

This product will provide you questions and answers along with detailed explanations carefully compiled and written by our experts. Try to understand the concepts behind the questions instead of cramming the questions. Go through the entire document at least twice so that you make sure that you are not missing anything.

Latest Version

We are constantly reviewing our products. New material is added and old material is revised. Free updates are available for 90 days after the purchase. You should check the products page on the <http://www.chinatag.com> website for an update 3-4 days before the scheduled exam date.

Please tell us what you think of our products. We appreciate both positive and critical comments as your feedback helps us improve future versions. Feedback on specific questions should be send to feedback@chinatag.com.

Thanks for purchasing our products and look forward to supplying you with all your Certification training needs.

Good studying!

Technical and Support Team
Chinatag LLC.

Objective

A.	Managing Users, Computers, and Groups
B.	Managing and Maintaining Access to Resources
C.	Managing and Maintaining a Server Environment
D.	Managing and Implementing Disaster Recovery
E.	Implementing, Managing, and Maintaining Name Resolution
F.	Implementing, Managing, and Maintaining Network Security

⇒ Relevant objective of each question is mentioned with question number.

Question: 1. (A)

You are the file server administrator for Company. The company network consists of a single Active Directory domain named Company.com. The domain contains 12 Windows Server 2003 computers and 1,500 Windows XP Professional computers.

You manage three servers named Company1, Company2, and Company3. You need to update the driver for the network adapter that is installed in Serve1.

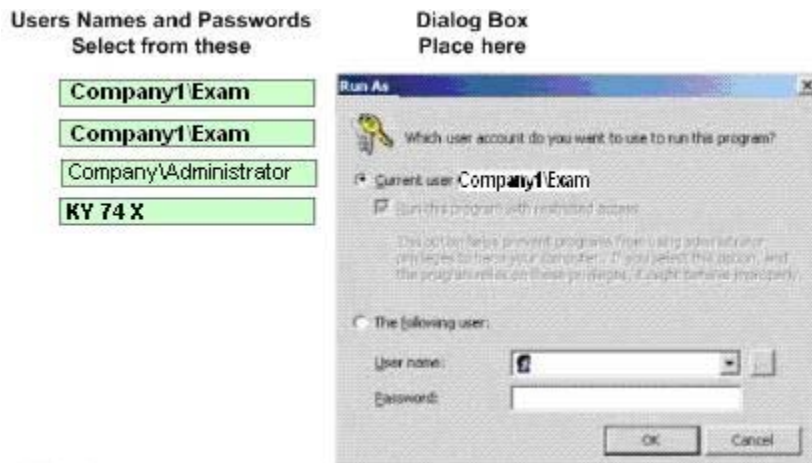
You log on to Company1 by using a non administrative domain user account named Sheet. You open the Computer Management console. When you select Device Manager, you receive the following error message: "You do not have sufficient security privileges to uninstall devices or to change device properties or device drivers".

You need to be able to run the Computer Management console by using the local administrator account.

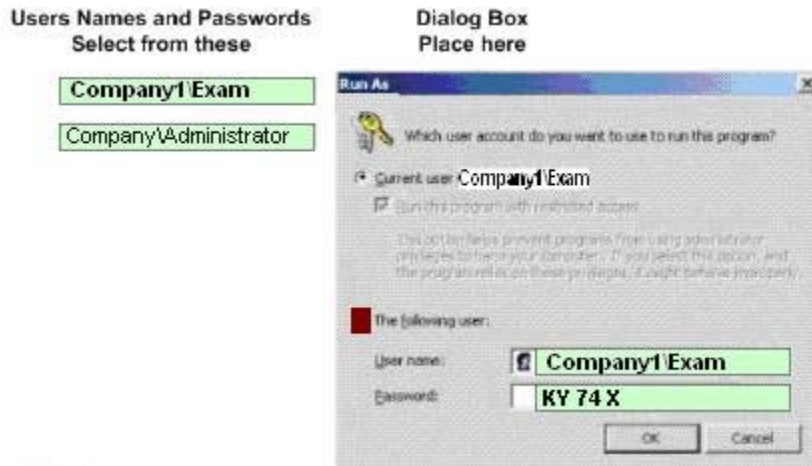
The local administrator account on Company1, Company2, and Company3 has been renamed Smith. Smith's password is kY74X.

In Control Panel, you open Administrative Tools. You right-click the Computer Management shortcut and click Run as on the shortcut menu.

What should you do next?



Answer:

**Explanation:**

Choose "The following User" because you want to run the program under a different account to the one you're logged in with. Enter "Company1\Smith" in the User Name field, enter kY74X" in the password field. Company1\Smith indicates a user account named Smith on a computer named Company1; in this case, this is the local administrator account.

Reference:

Dan Balter, MCSA/MCSE Managing and Maintaining a Microsoft Windows® Server 2003 Environment Exam Cram™ 2 (Exam 70-290), Chapter 2

Question: 2. (A)

You are the network administrator for Company. The network consists of a single Active Directory domain named Company.com. All network servers run Windows Server 2003.

You use a script written in Microsoft Visual Basic, Scripting Edition (VBScript) to create new user accounts.

You need to modify the script and enable all new user accounts created from the script.

What should you do?

To answer, drag the appropriate line or lines of code to the correct location or locations in the work area.

Lines of Code	Work Area
oRoot.AccountDisabled = False	<pre> AddSales.vbs - Notepad File Edit Format View Help Set oRoot = GetObject("LDAP://rootdse") Set oDomain = GetObject("LDAP://" & oRoot.Get("defaultnamingcon Drag object here. Set oOU=oDomain.Create("organizationalUnit","ou=Employee OU") oOU.Put "description", "Employee OU" Drag object here. oOU.SetInfo Set oUser = oOU.Create("User", "cn=Employee Admin User") oUser.Put "SAMAccountName", "empadminuser" oUser.Put "Description", "Employee Admin User" Drag object here. oUser.SetInfo oUser.SetPassword "5qwt#z7" Drag object here. oUser.SetInfo Set oOU = GetObject("LDAP://ou=Employee OU,dc=contoso,dc=com") Set oOU=oOU.Create("organizationalUnit","ou=Sales OU") oOU.Put "description", "Sales OU" Drag object here. oOU.SetInfo For i = 1 To 5 Set oLeaf = oOU.Create("User", "cn=Salesuser" & i) oLeaf.Put "SAMAccountName", "Salesuser" & i oLeaf.SetInfo oLeaf.SetPassword "x7&fg0" Drag object here. oLeaf.SetInfo </pre>
oUser.AccountDisabled = False	
oLeaf.AccountDisabled = False	
oDomain.AccountDisabled = False	

Answer:

Lines of Code	Work Area
oRoot.AccountDisabled = False	<pre> AddSales.vbs - Notepad File Edit Format View Help Set oRoot = GetObject("LDAP://rootDSE") Set oDomain = GetObject("LDAP://" & oRoot.Get("defaultNamingContext")) Drag object here. Set oOU=oDomain.Create("organizationalunit","ou=Employee OU") oOU.Put "description", "Employee OU" Drag object here. oOU.SetInfo Set oUser = oOU.Create("User", "cn=Employee Admin User") oUser.Put "SAMAccountName", "EmpAdminUser" oUser.Put "description", "Employee Admin User" Drag object here. oUser.SetInfo oUser.SetPassword "5owI#2?" oUser.AccountDisabled = False oUser.SetInfo Set oOU = GetObject("LDAP://ou=employee ou,dc=contoso,dc=com") Set oOU.Create("organizationalunit","ou=sales OU") oOU.Put "description", "Sales OU" Drag object here. oOU.SetInfo For i = 1 To 5 Set oLeaf = oOU.Create("User", "cn=salesuser" & i) oLeaf.Put "SAMAccountName", "Salesuser" & i oLeaf.SetInfo oLeaf.SetPassword "x7&fg0" oLeaf.AccountDisabled = False oLeaf.SetInfo </pre>
oUser.AccountDisabled = False	
oLeaf.AccountDisabled = False	
oDomain.AccountDisabled = False	

Explanation:

The key here is that we need to enable all new user accounts.

This script creates two different sets of user accounts, one to create the Empadminuser and one counter to create salesuser from 1 to 5.

We need to enable all new accounts, in this way we needed to drag and drop.

oUser.AccountDisabled = False for enable user Empadminuser. to oUser set info part
oLeaf.AccountDisabled = False for enable users SalesUser1, SalesUser2, SalesUser3, SalesUser4, SaleUser5 to oLeaf set info part

Reference:

<http://www.microsoft.com/technet/treeview/default.asp?url=/technet/prodtechnol/windowsserver2003/proddocs/entserver/ctasks022.asp>

Deborah Littlejohn Shinder and Dr. Thomas W. Shinder, MCSA/MCSE Exam 70-290: Managing and Maintaining a Windows Server 2003 Environment Study Guide & DVD Training System, p. 692

Question: 3. (A)

You are the network administrator for Company. The network consists of a single Active Directory domain Company.com. All network servers run Windows Server 2003.

User profiles are stored in a folder named Profileshome, which is located on a member server named Server1. Profileshome is shared as Profiles.

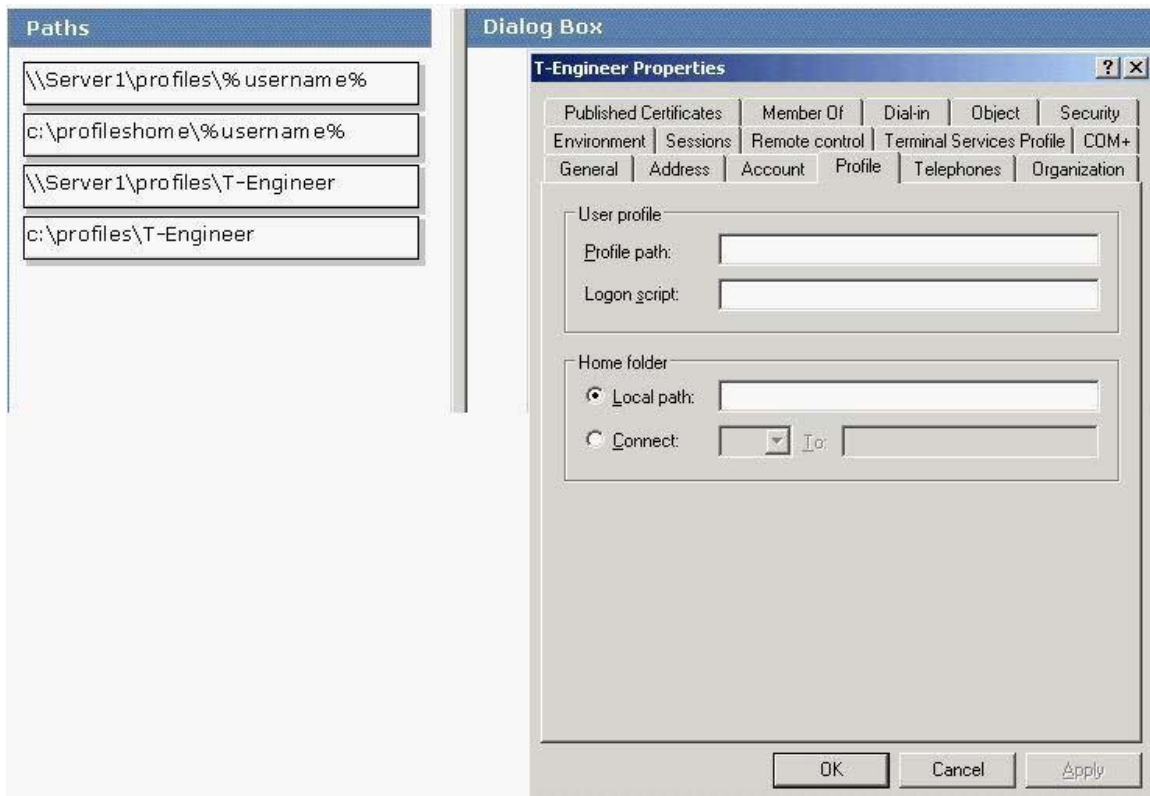
A change in business rules requires you to create a template account for users in the engineering department. All user accounts that are created from the template will use roaming profiles. Each profile name will be based on user name. All profiles must be stored in a central location.

You create the template and name it T-Engineer.

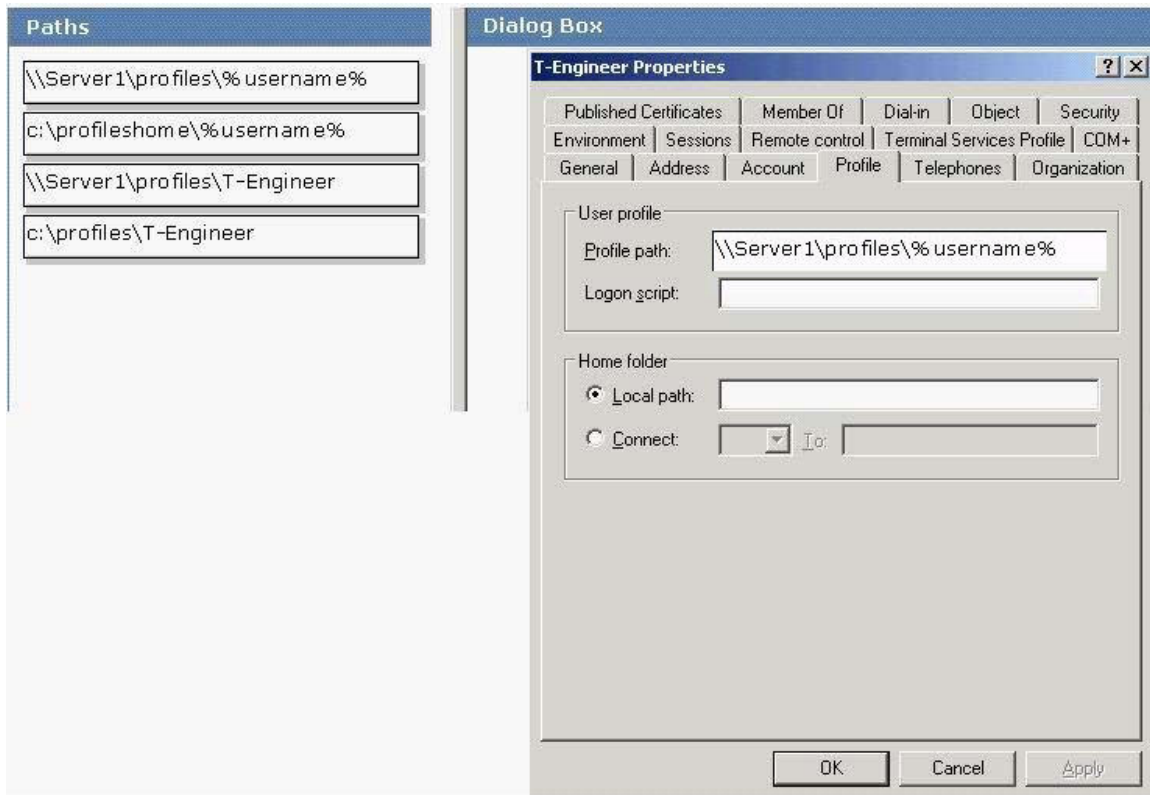
Now you need to add information about profile location to T-Engineer.

What should you do?

To answer, drag the appropriate path or paths to the correct location or locations in the dialog box.



Answer:

**Explanation:**

The users will log on the client computers and will be authenticated on domain controllers. The roaming profiles are stored on a member server, so we must enter the UNC path to the shared profiles folder in the profile path. In this case, the UNC path is \\Server1\profiles. To create profiles based on the user names, we can use the %username% variable. The %username% variable will be changed the users log in name when the user logs in. For example, if a user named Smith logs in, \\Server1\profiles\%username% will become \\Server1\profiles\Smith.

References:

Deborah Littlejohn Shinder and Dr. Thomas W. Shinder, MCSA/MCSE Exam 70-290: Managing and Maintaining a Windows Server 2003 Environment Study Guide & DVD Training System, p. 285

Question: 4. (A)

You are the network administrator for Company. The network consists of a single Active Directory domain named Company.com. All five domain controllers run Windows Server 2003, and all client computers run Windows XP Professional.

The domain's audit policy ensures that all account logon events are audited.

A temporary employee named Sheet uses a client computer named Company1. When Sheet's temporary assignment concludes, his employment is terminated.

Now you need to learn the times and dates when Sheet logged on to the domain. You need to accomplish this goal by reviewing the minimum amount of information.

What should you do?

- A. Log on to Company1 as a local Administrator.
Use Event Viewer to view the local security log.
Use the Find option to list only the events for Sheet's user account.
- B. Log on to Company1 as a local Administrator.
Use Event Viewer to view the local security log.
Use the Find option to list only the events for the Company1 computer account.
- C. Use Event Viewer to view the security log on each domain controller.
Use the Find option to list only the events for Sheet's user account.
- D. Use Event Viewer to view the security log on each domain controller.
Set a filter to list only the events for Sheet's user account.
- E. Use Event Viewer to view the security log on each domain controller.
Set a filter to list only the events for the Company1 computer account.

Answer: D

Explanation:

When a user logs on to a domain, (and auditing is enabled), the authenticating domain controller will log an event in its log. It is likely that multiple domain controllers have authenticated the user at different times; therefore, we must examine the security log on each domain controller. In event viewer, you can set various filters to simplify the search for information. In this case, we can filter the logs to show events for only the users account.

The default auditing policy setting for domain controllers is No Auditing. This means that even if auditing is enabled in the domain, the domain controllers do not inherit auditing policy locally. If you want domain auditing policy to apply to domain controllers, you must modify this policy setting.

Incorrect Answers:

- A:** The logon events will be recorded in the logs on the domain controllers, not the client computer.
- B:** The logon events will be recorded in the logs on the domain controllers, not the client computer.
- C:** The Find option will move to the next event in the log according to the Find criteria. It will not filter the log to just show the relevant information.
- E:** This will show when someone logged on to Company1 using a domain account.
This is not what we're looking for.

Reference:

Deborah Littlejohn Shinder, Dr. Thomas W. Shinder, Laura E. Hunter & Will Schmied, Managing and Maintaining a Windows Server 2003 Environment Study Guide & DVD Training System, pp. 786-789

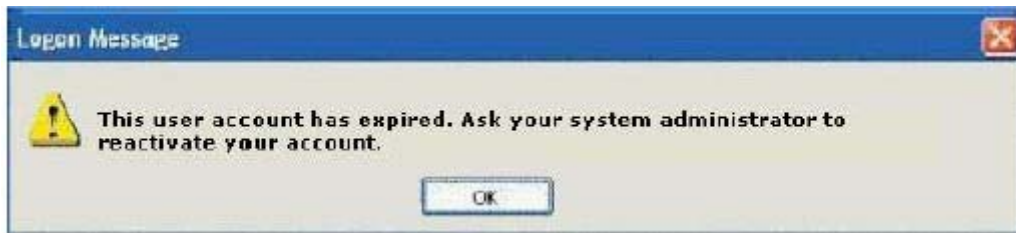
Question: 5. (A)

You are the network administrator for Company GmbH. The network consists of a single Active Directory domain named Company.com. All network servers run Windows Server 2003, and all client computers run Windows XP Professional.

Company's main office is located in Berlin, which is also the location of all domain controllers. The Berlin office contains 200 client computers.

A branch office is located in Helsinki. This office contains 60 client computers. All user accounts for permanent employees in Helsinki are contained in an organizational unit (OU) named HelUsers. All user accounts for temporary employees in Helsinki are contained in an OU named TempUsers.

A temporary employee named Sheet is hired in the Helsinki office. The business hours in his office are 9:00 A.M. to 5:00 P.M. at 9:05 A.M. on his first Monday at work, Sheet tries to log on to the domain from his client computer. However, he receives the message shown in the exhibit.



You need to ensure that Sheet can log on to the domain. What should you do?

- A. Move Sheet's account to HelUsers.
Create a Group Policy object (GPO) and link it to HelUsers.
In the GPO, decrease the account lockout duration.
- B. Make TempUsers a child of HelUsers.
Create a Group Policy object (GPO) and link it to HelUsers.
In the GPO, decrease the account lockout threshold.
- C. Modify the properties of Sheet's user account to the Logon Hours setting is the same as the business hours for the Helsinki office.
- D. Modify the properties for Sheet's user account to extend the dates during which his account can be used.

Answer: D

Explanation:

The user account has expired. This means that the user account was created with an expiry date set. We need to modify the user account to extend the dates during which his account can be used. In other words, we need to set the account to expire at a later date.

Incorrect Answers:

- A:** The accounts in HelUsers are for permanent users and have no expiry date. Sheet is a temporary user so we should set an expiry date on his account. The account lockout duration is the time an account is locked out after failed log on attempts due to incorrect username or passwords. It is not related to this question.
- B:** We don't need to rearrange the OU structure. The account lockout threshold is related to logon failures due to incorrect username or passwords. It is not related to this question.
- C:** The logon hours setting is not the cause of the problem. The account has expired. If you tried to log on 'out of hours', you would get a different error message.

References:

Deborah Littlejohn Shinder and Dr. Thomas W. Shinder, MCSA/MCSE Exam 70-290: Managing and Maintaining a Windows Server 2003 Environment Study Guide & DVD Training System, pp. 282, 318

Question: 6. (A)

You are the administrator of Company's network. Your accounting department has a Windows Server 2003 computer named CompanySrvA. This computer hosts a secured application that is

shared among several users in the accounting department. All users of the application must log on locally to CompanySrvA.

You decide to create desktop shortcuts that point to the application. These shortcuts must be available only to new users of CompanySrvA.

Which folder or folders should you modify on Server? (Choose all that apply)
To answer, select the appropriate folder or folders in the work area.



Answer: Default User

Explanation:

When a new user logs on to a machine for the first time, a new profile is created for that user. The "Default User" profile is copied and given the same name as the username. Any settings in the Default User profile will be applied to any new users.

Incorrect Answers:

All Users: Settings in this profile apply to all users of the machine, including current users. This is contrary to the requirements set out in the question.

Administrator, MZimmerman, RHunter, User: These are all user profiles. i.e. Profiles belonging to users who have logged in to the computer.

References:

Deborah Littlejohn Shinder and Dr. Thomas W. Shinder, MCSA/MCSE Exam 70-290: Managing and Maintaining a Windows Server 2003 Environment Study Guide & DVD Training System, pp. 286-292

Question: 7. (A)

You are the network administrator for your company. The network consists of a single Active Directory domain named proseware.com. All network servers run Windows Server 2003, and all client computers run Windows 2000 Professional. Your company is organized in three departments. Each department corresponds to a separate organizational unit (OU). Computer

accounts for each department reside in the corresponding OU. Domain users report that their accounts are locked out after three unsuccessful attempts to log on. You need to increase your account lockout setting to five unsuccessful attempts to log on. You also need to ensure that you can review all unsuccessful attempts to log on to the domain or to log on locally to client computers. The new settings must be applied to a limited number of objects. What should you do? To answer, drag the appropriate security policy settings to the correct locations in the work area.



Answer:



Explanation:

Account Lockout Settings must always be applied at domain level. If they are applied at any other level (OU for example), they will not apply to domain user accounts.

Audit Account Logon Events: This is for auditing logon events for domain accounts; therefore, this policy must be applied to the domain controllers.

Audit Logon Events: This is for auditing local logon events. The Marketing, Finance and Research OUs all contain computer accounts, so we must apply this policy to all three OUs.

References:

Deborah Littlejohn Shinder and Dr. Thomas W. Shinder, MCSA/MCSE Exam 70-290: Managing and Maintaining a Windows Server 2003 Environment Study Guide & DVD Training System, p. 317

Question: 8. (A)

You are the network administrator for Company. The network consists of a single Active Directory domain named Company.com. All network servers run Windows Server 2003, and all client computers run Windows XP Professional. The network includes a member server named CompanySrvB.

You need to create a shared folder on CompanySrvB to store project documents. You must fulfil the following requirements:

- Users must be able to access previous versions of the documents in the shared folder.
- Copies of the documents must be retained every hour during business hours.
- A history of the last 10 versions of each document must be maintained.
- Documents that are not contained in the shared folder must not be retained.

Which two actions should you perform?

(Each correct answer presents part of the solution. Choose two)

- A. Create the shared folder in the root of the system disk on CompanySrvB.
- B. Create a new volume on CompanySrvB.
Create the shared folder on the new volume.
- C. Enable the Offline Files option to make the shared folder available offline.
- D. Enable the Offline Files option to make the shared folder automatically available offline.
- E. Use Disk Management to configure shadow copies of the volume that contains the shared folder.

Answer: B, E

Explanation:

To be able to save previous version of files, you need to enable Shadow Copies. Whenever changes to a file are saved, a copy of the previous version of the file is automatically saved. The shared folder must be on a new volume on the member server, CompanySrvB. After you enable shadow copies on the server and install the shadow copy client software on the desktop computer, end users can right-click on a file and view previous versions that were backed up via shadow copies. They can then keep the current version of the file or roll back to an early version.

Incorrect Answers:

A: We should avoid using the system disk to configure Shadow Copies for better performance and to not waste disk space. We should create a new volume and configure the shared folder in that volume for project documents.

C: We need to enable Shadow Copies, not offline files. Offline files is a feature in Windows Server 2003, Windows XP, and Windows 2000 that allows users to continue to work with network files and programs even when they are not connected to the network. When a network connection is restored or when users dock their mobile computers, any changes that were made while users were working offline are updated to the network. When more than one user on the network has made changes to the same file, users are given the option of saving their specific version of the file to the network, keeping the other version, or saving both.

D: We need to enable Shadow Copies, not offline files.

Reference:

Deborah Littlejohn Shinder, Dr. Thomas W. Shinder, Laura E. Hunter & Will Schmied, MCSA/MCSE:

Exam 70-290: Managing and Maintaining a Windows Server 2003 Environment Study Guide & DVD Training System, p. 29

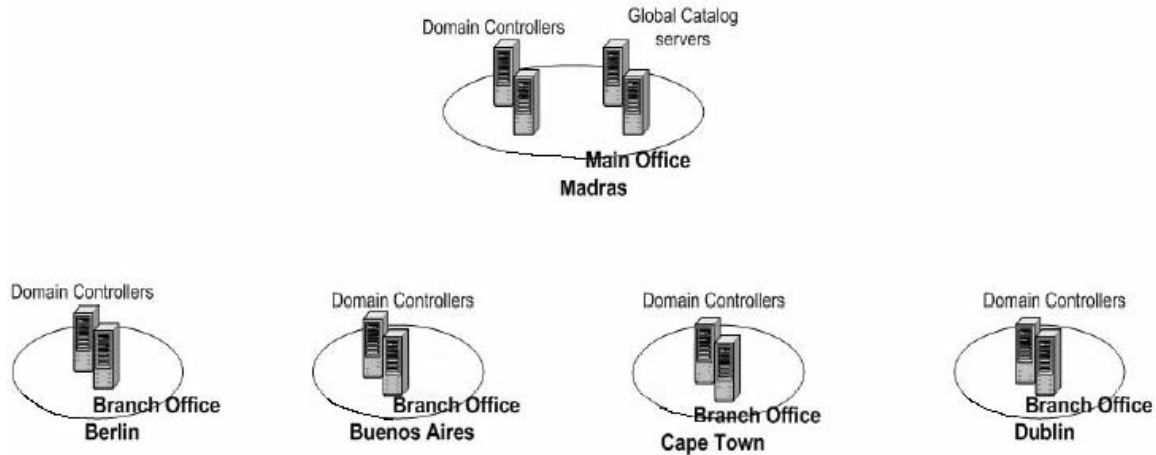
Dan Balter, MCSA/MCSE Managing and Maintaining a Microsoft Windows® Server 2003 Environment Exam Cram™ 2 (Exam 70-290), Chapter 5

Question: 9. (A)

You are the network administrator for Company. Your network consists of three Active Directory domains in a single forest. You do not have administrative rights to the forest.

All domain controllers run Windows Server 2003. Universal group membership caching is enabled.

Company has a main office in Madras and five branch offices located worldwide. Each office is configured as an Active Directory site, as shown in the exhibit.



Each office contains three domain controllers, one for each domain.

A new employee named Dr Sheet is hired in the Berlin office. You create a new user account for Dr Sheet from a domain controller in Berlin. However, Dr Sheet reports that he cannot log on to his domain. Other users from Berlin reports no difficulties.

You need to ensure that Dr Sheet can log on successfully.

What should you do?

- A. Delete the user account in Berlin.
Recreate the user account in Madras.
- B. Force directory replication between all domain controllers in Berlin.
- C. Restore network connectivity between the domain controllers in Berlin and Madras.
- D. Instruct Dr Sheet to use his user principal name when he logs on for the first time.

Answer: C

Explanation:

When a new user logs on to a native mode domain, the authenticating domain controller needs to be able to contact a Global Catalog server to obtain universal group information. The Global Catalog servers are in the Madras office, so a lack on network connectivity between Berlin and Madras would prevent the new user from being able to log on. The reason no one else has a problem logging on is that Universal Group caching is enabled. However, the information in the cache on the Berlin domain controller is out of date in the sense that it doesn't contain information about the new user.

Incorrect Answers:

- A:** The account does not need to be created in Madras. It can be created on any domain controller in the domain.
- B:** The domain controllers in Berlin are in separate domains. They do not need to replicate to

each other.

D: You don't have to log on using your UPN name. The question states that the user couldn't log on to "his" domain. This implies that he either attempted to log on using his UPN or he entered his downlevel username and selected the correct domain in the drop down box.

Reference:

Deborah Littlejohn Shinder, Dr. Thomas W. Shinder, Chad Todd & Laura Hunter, Implementing, Managing, and Maintaining a Windows Server 2003 Network Infrastructure Guide & DVD Training System, p. 426

Question: 10. (A)

You are the network administrator for Company. The network consists of a single Active Directory domain named Company.com. The functional level of the domain is Windows Server 2003.

Some user accounts have expiring passwords and some do not.

You need to identify all user accounts that do not have expiring passwords. You need to modify the password property to allow the passwords on these accounts to expire. You must complete this task by using the minimum amount of administrative effort.

First, you create a saved query to obtain a list of all user accounts that do not have expiring passwords.

What should you do next?

- A. Export the query results to a comma-delimited file.
Use CSVDE script to modify the password property of each user accounts.
- B. From the Result pane of the query, select all user accounts and modify their passwords properties simultaneously.
- C. Export the query results to a comma-delimited file.
Use an LDIFDE script to modify the password property of each user account.
- D. From the Result pane of the query, select each user account and modify the password property, one by one.

Answer: B

Explanation:

You have created a saved query to obtain a list of all user accounts that do not have expiring passwords. A new feature of Windows 2003 is that you can make changes to the properties of multiple user accounts simultaneously. You can do this by displaying the resultant set of user accounts from the query, selecting them all and accessing the properties of the accounts. Here you can make a change that will apply to all user accounts.

Incorrect Answers:

A: A script is not necessary because it is not the quickest way to make the same change to multiple accounts. The csvde (CSV Directory Exchange) command can be used to import and export Active Directory information using files formatted in the Microsoft comma-separated value (CSV), or comma delimited, format. The csvde command can also support batch operations. The csvde command only allows you to add new objects. It does not allow you to modify existing objects.

C: A script is not necessary because it is not the quickest way to make the same change to multiple accounts. The ldifde (LDIF Directory Exchange) command can be used to create, modify, and delete directory objects on Windows Server 2000, Windows Server 2003 and Windows XP Professional. You can also use ldifde to extend the schema, export Active Directory user and

group information to other LDAP (Lightweight Directory Access Protocol) applications or services, and populate Active Directory with data from other directory services. The `ldifde` command, however, uses the LDAP Data Interchange Format (LDIF) file format, which is a draft Internet standard for a file format that may be used to perform batch operations against directories that conform to the LDAP standards.

D: A new feature of Windows 2003 is that you can make changes to the properties of multiple user accounts simultaneously. You don't need to do it one at a time. This option will take much longer than option B though it will achieve the same result after much more administrative effort.

References:

Dan Holme and Thomas Orin, MCSA/MCSE Self-Paced Training Kit (Exam 70-290): Managing and Maintaining a Microsoft Windows Server 2003 Environment, pp. 3: 16, 20, 4: 13, 13: 6.