



**70-290**

**Managing and Maintaining a Microsoft Windows Server 2003  
Environment**

Q&A

DEMO Version

## **Important Note Please Read Carefully**

For demonstration purpose only, this free version Chinatag study guide contains **10** full length questions selected from our full version products which have more than **200** questions each.

This Study guide has been carefully written and compiled by Chinatag certification experts. It is designed to help you learn the concepts behind the questions rather than be a strict memorization tool. Repeated readings will increase your comprehension.

For promotion purposes, all PDF files are **not** encrypted. Feel free to distribute copies among your friends and let them know Chinatag website.

## **Study Tips**

This product will provide you questions and answers along with detailed explanations carefully compiled and written by our experts. Try to understand the concepts behind the questions instead of cramming the questions. Go through the entire document at least twice so that you make sure that you are not missing anything.

## **Latest Version**

We are constantly reviewing our products. New material is added and old material is revised. Free updates are available for 90 days after the purchase. You should check the products page on the <http://www.chinatag.com> website for an update 3-4 days before the scheduled exam date.

Please tell us what you think of our products. We appreciate both positive and critical comments as your feedback helps us improve future versions. Feedback on specific questions should be send to [feedback@chinatag.com](mailto:feedback@chinatag.com).

Thanks for purchasing our products and look forward to supplying you with all your Certification training needs.

Good studying!

Technical and Support Team  
Chinatag LLC.

**QUESTION 1**

You are the network administrator for your company. The network consists of a single Active Directory domain. All domain controllers run Windows Server 2003. All client computers run Windows XP Professional with default settings. Some users have portable computers, and the rest have desktop computers.

You need to ensure that all users are authenticated by a domain controller when they log on.

How should you modify the local security policy?

- A. Require authentication by a domain controller to unlock the client computer.
- B. Cache zero interactive logons.
- C. Cache 50 interactive logons.
- D. Grant the Log on locally user right to the Users group.

**Answer: B**

**QUESTION 2**

You have a server that runs Windows Server 2003 Service Pack 2 (SP2).

You need to ensure that a defragmentation of the server's hard disk drive runs each night.

What should you do?

- A. Create a scheduled task that runs Dfrg.msc.
- B. Create a scheduled task that runs Defrag.exe.
- C. From Computer Management, run Disk Management.
- D. From Computer Management, run Disk Defragmenter.

**Answer: B**

**QUESTION 3**

Your network contains a server named Server1 that runs Windows Server 2003 Service Pack (SP2).

You install a new network adapter on Server1.

You need to view the media access control (MAC) address for the new network adapter.

What should you do?

- A. At the command prompt, run Ipconfig /all.
- B. At the command prompt, run Net view \\server1.
- C. From the Device Manager snap-in, view the properties of the network adapter.
- D. From the Services snap-in, view the properties on the Network Connections service.

**Answer: A**

**QUESTION 4**

You have a server that runs Windows Server 2003 Service Pack 2 (SP2).

You need to identify all the unsigned drivers that are installed on the server.

What should you do?

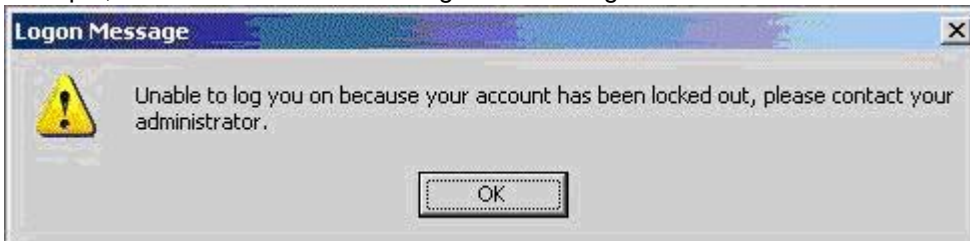
- A. Run Chkdsk.exe.
- B. Run Sigverif.exe.
- C. Review %systemroot%\repair\setup.log.
- D. Open Device Manager and review all the devices that contain a warning.

**Answer: B**

#### QUESTION 5

Your network consists of a single Active Directory domain. All servers run Windows Server 2003 Service Pack 2 (SP2). All client computers run Windows XP Professional Service Pack 3 (SP3).

A domain user named User1 attempts to log on to a computer named Computer1. After several failed logon attempts, User1 receives the following error message.



You reset the password for User1 and provide the new password to User1.

You need to ensure that User1 can log on immediately.

What should you do?

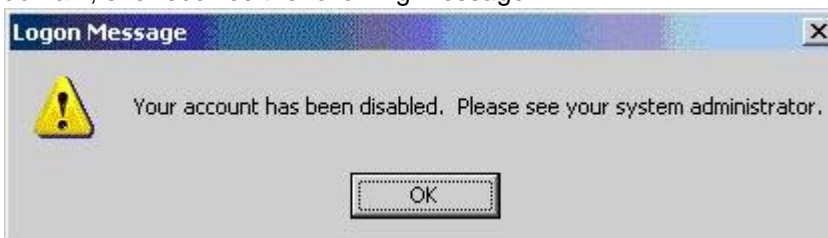
- A. Modify the Account settings for User1.
- B. Modify the Session settings for User1.
- C. Disable User1 and then enable User1.
- D. Disable Computer1 and then enable Computer1.

**Answer: A**

#### QUESTION 6

Your network consists of a single Active Directory domain. All servers run Windows Server 2003 Service Pack 2 (SP2). All client computers run Windows XP Professional Service Pack 3 (SP3).

You create an account for a new user named User1. User1 reports that when she first attempts to log on to the domain, she receives the following message.



Other users report that they can log on to the domain from User1's computer.

You need to ensure that User1 can log on to the domain.

What should you do?

- A. Modify the properties of User1's account.
- B. Modify the properties of the computer account.
- C. On User1's computer, create a local user account.
- D. On User1's computer, modify the local security policy.

**Answer: A**

#### **QUESTION 7**

Your network consists of a single Active Directory domain. The domain contains a server named Server1 that runs Windows Server 2003 Service Pack 2 (SP2).

Your company's security policy states that domain users must be prevented from logging on to Server1 if a domain controller is unavailable.

You disconnect Server1 from the network and discover that you can log on to Server1.

You need to configure Server1 to comply with the company's security policy.

What should you do on Server1?

- A. From the local security policy, modify the Security Options.
- B. From the local security policy, modify the User Rights Assignment.
- C. From Active Directory Users and Computers, modify the properties of the Server1 account.
- D. From Active Directory Users and Computers, modify the properties of the Domain Computers group.

**Answer: A**

#### **QUESTION 8**

Your network consists of a single Active Directory domain. All servers run Windows Server 2003 Service Pack 2 (SP2). All client computers run Windows XP Professional Service Pack 3 (SP3).

You have a server that contains two volumes named C and D. Volume C contains a folder named Data that contains over 10,000 files and folders.

You need to copy the Data folder to volume D. The solution must maintain the current ownership settings.

Which tool should you use?

- A. Copy
- B. Move
- C. Xcacls
- D. Xcopy

**Answer: D**

**QUESTION 9**

Your network consists of a single Active Directory domain. All servers run Windows Server 2003 Service Pack 2 (SP2).

You have two global groups named Research and ResearchManagers. The Research group contains all users in a department named Research. The ResearchManagers group contains all managers in the Research department. All members of the ResearchManagers group are members of the Research group.

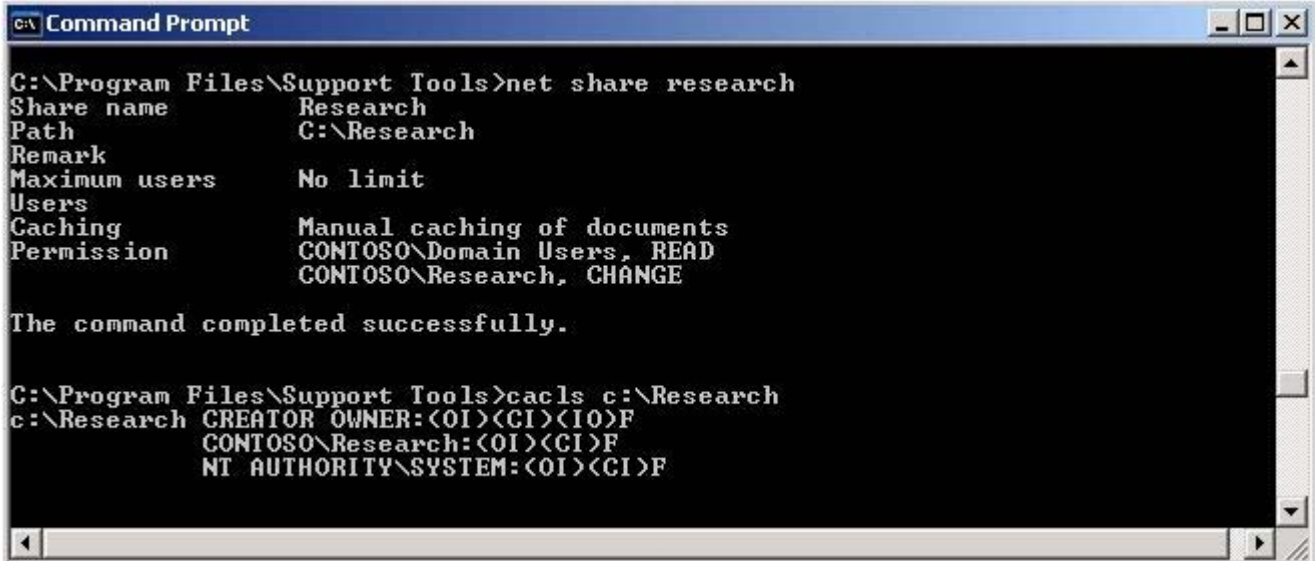
You create a shared folder named Research. The permissions for the Research share are shown in the exhibit. (Click the Exhibit button.)

You need to modify the share permissions to ensure that only members of the ResearchManagers group can add

and modify files over the network.

What should you do?

**Exhibit:**



```

C:\Program Files\Support Tools>net share research
Share name      Research
Path            C:\Research
Remark
Maximum users   No limit
Users
Caching         Manual caching of documents
Permission      CONTOSO\Domain Users, READ
                CONTOSO\Research, CHANGE

The command completed successfully.

C:\Program Files\Support Tools>cacls c:\Research
c:\Research CREATOR OWNER:(OI)(CI)(IO)F
            CONTOSO\Research:(OI)(CI)F
            NT AUTHORITY\SYSTEM:(OI)(CI)F
  
```

- A. Remove the Domain Users group.
- B. Change the permission assigned to the Research group to Allow - Read.
- C. Remove the Research group. Change the Domain Users permission to Allow - Change.
- D. Remove the Research group. Add the ResearchManagers group and assign the group Allow - Change permission.

**Answer: D**

**QUESTION 10**

Your network consists of a single Active Directory domain. All servers run Windows Server 2003 Service Pack 2 (SP2). The primary group for all users is Domain Users.

You share a folder named Data. The shared folder is located on a server named Server1.

A user in the Research group named User1 reports that she cannot access files in the Data shared folder. You verify that User1 is not listed in the access control list of the shared folder.

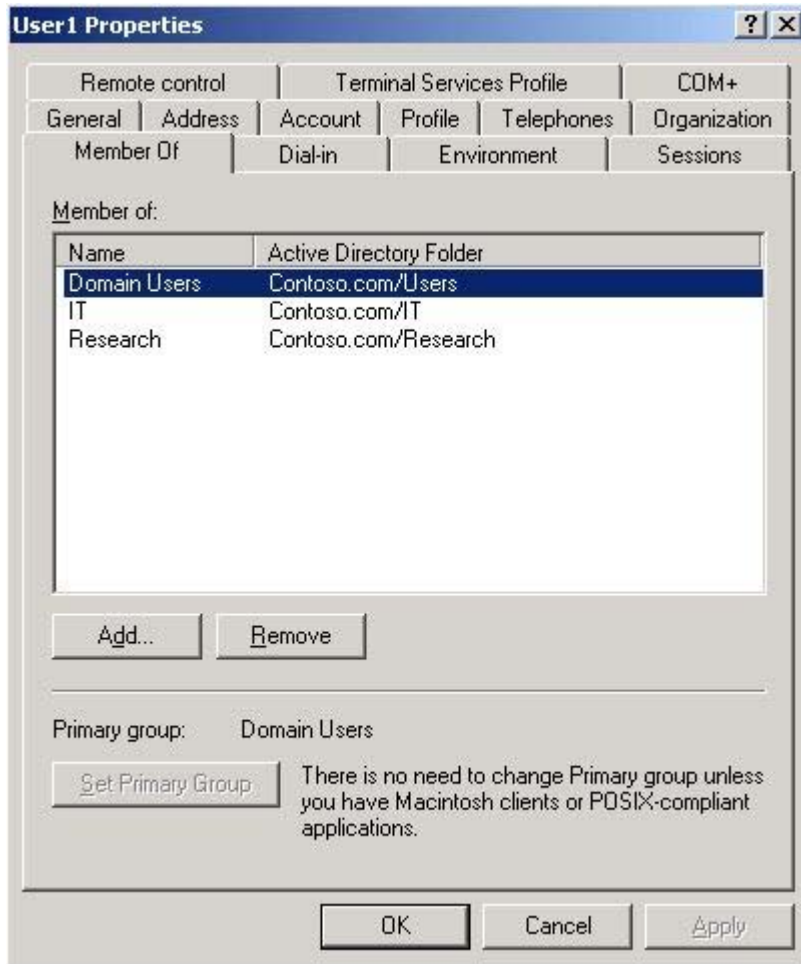
You examine the properties of the User1 account. The properties are shown in the exhibit. (Click the Exhibit button.)

Other members of the Research group can add and modify files in the Data shared folder.

You need to ensure that User1 can access files in the Data shared folder.

What should you do?

**Exhibit:**



- A. Remove User1 from the IT group.
- B. Assign the Change permission to User1.
- C. Remove User1 from the Domain Users group.
- D. Add User1 to the Server Operators group on Server1.

**Answer: A**