



640-816

Interconnecting Cisco Networking Devices Part 2

Q&A

DEMO Version

Copyright (c) 2012 Chinatag LLC. All rights reserved.

Important Note Please Read Carefully

For demonstration purpose only, this free version Chinatag study guide contains **10** full length questions selected from our full version products which have (average) more than **200** questions each.

This Study guide has been carefully written and compiled by Chinatag certification experts. It is designed to help you learn the concepts behind the questions rather than be a strict memorization tool. Repeated readings will increase your comprehension.

For promotion purposes, all PDF files are **not** encrypted. Feel free to distribute copies among your friends and let them know Chinatag website.

Study Tips

This product will provide you questions and answers along with detailed explanations carefully compiled and written by our experts. Try to understand the concepts behind the questions instead of cramming the questions. Go through the entire document at least twice so that you make sure that you are not missing anything.

Latest Version

We are constantly reviewing our products. New material is added and old material is revised. Free updates are available for 90 days after the purchase. You should check the products page on the <http://www.chinatag.com> website for an update 3-4 days before the scheduled exam date.

Please tell us what you think of our products. We appreciate both positive and critical comments as your feedback helps us improve future versions. Feedback on specific questions should be send to feedback@chinatag.com.

Thanks for purchasing our products and look forward to supplying you with all your Certification training needs.

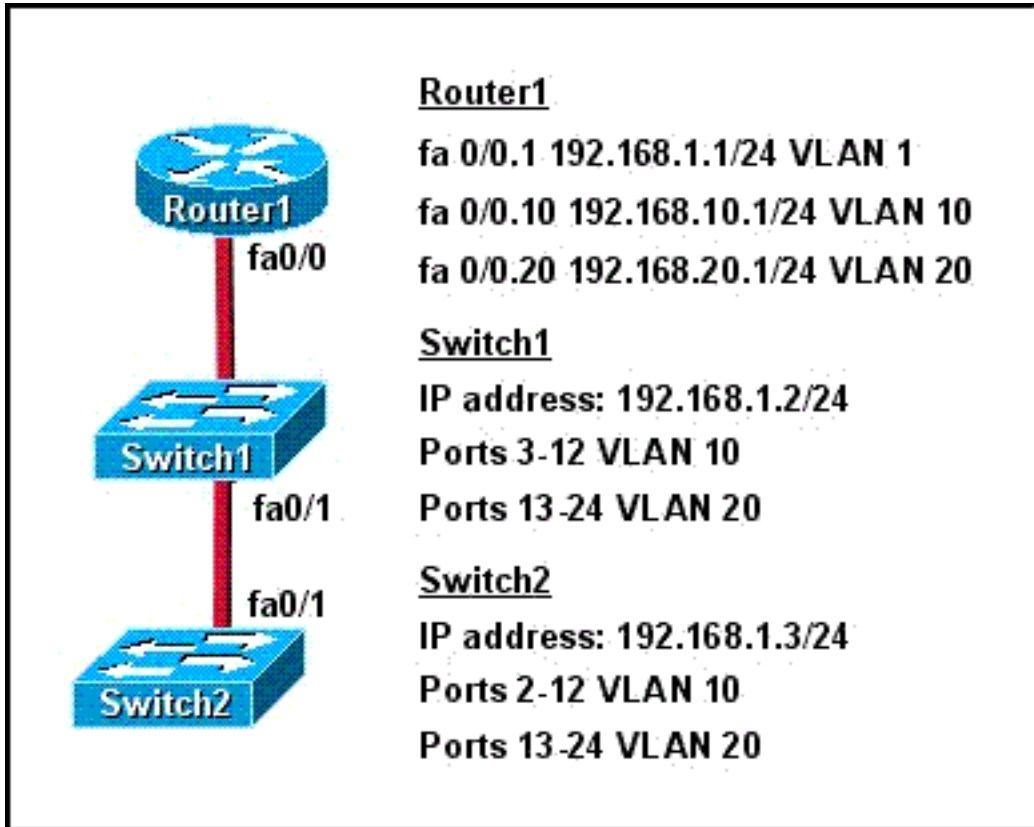
Good studying!

Technical and Support Team
Chinatag LLC.

Topic 1, Volume A

QUESTION NO: 1

Refer to the exhibit.



How should the FastEthernet0/1 ports on the 2950 model switches that are shown in the exhibit be configured to allow connectivity between all devices?

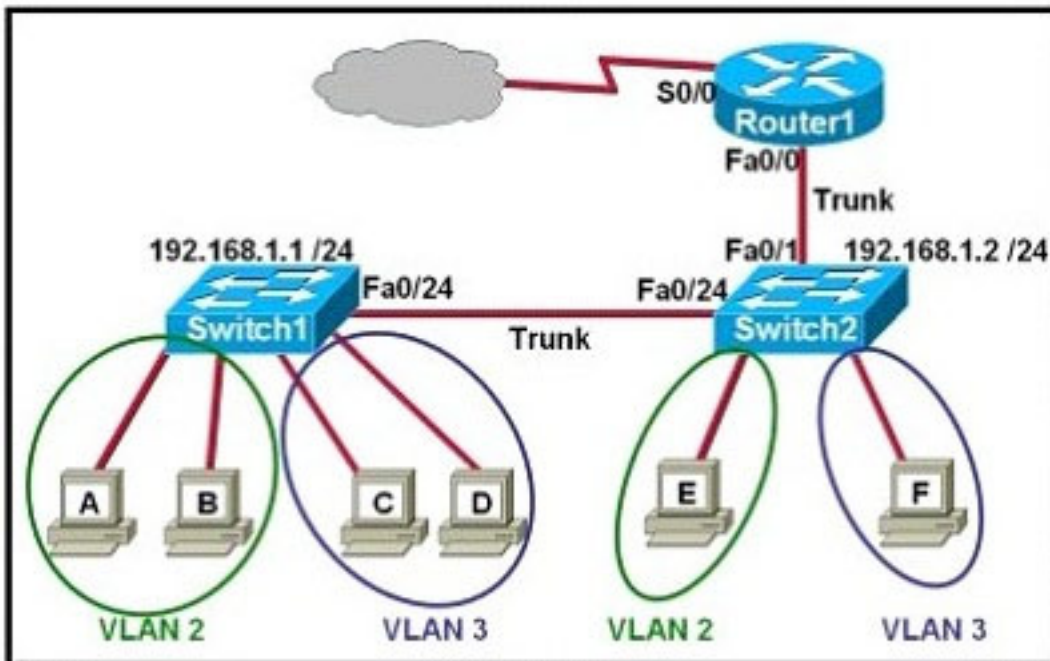
- A. The ports only need to be connected by a crossover cable.
- B. SwitchX (config)# interface fastethernet 0/1
SwitchX (config-if)# switchport mode access
SwitchX (config-if)# switchport access vlan 1
- C. SwitchX (config)# interface fastethernet 0/1
SwitchX (config-if)# switchport mode trunk
SwitchX (config-if)# switchport trunk vlan 1
SwitchX (config-if)# switchport trunk vlan 10
SwitchX (config-if)# switchport trunk vlan 20
- D. SwitchX(config)# interface fastethernet 0/1
SwitchX(config-if)# switchport mode trunk

Answer: D

Explanation:

QUESTION NO: 2

Refer to the exhibit.



Which two statements are true about interVLAN routing in the topology that is shown in the exhibit? (Choose two.)

- A. Host E and host F use the same IP gateway address.
- B. Router1 and Switch2 should be connected via a crossover cable.
- C. Router1 will not play a role in communications between host A and host D.
- D. The FastEthernet 0/0 interface on Router1 must be configured with subinterfaces.
- E. Router1 needs more LAN interfaces to accommodate the VLANs that are shown in the exhibit.
- F. The FastEthernet 0/0 interface on Router1 and Switch2 trunk ports must be configured using the same encapsulation type.

Answer: D,F

Explanation:

QUESTION NO: 3

A department decides to replace its hub with a Catalyst 2950 switch that is no longer needed by another department. To prepare the switch for installation, the network administrator has erased the startup configuration and reloaded the switch. However, PCs that are connected to the switch experience various connectivity problems. What is a possible cause of the problem?

- A. The VLAN database was not erased.
- B. The management VLAN is disabled.
- C. The running configuration should have been erased.
- D. The "mode" button was not pressed when the switch was reloaded.
- E. The switch was not configured with an IP address or a default gateway.

Answer: A

Explanation:

QUESTION NO: 4

Refer to the exhibit.

```
Switch# show spanning-tree vlan 1
VLAN0001
Spanning tree enabled protocol rstp
Root ID    Priority    20481
           Address    0008.217a.5800
           Cost      38
           Port      1 (FastEthernet0/1)
           Hello Time 2 sec  Max Age 20 sec  Forward Delay 15 sec

Bridge ID  Priority    32769 (priority 32768 sys-id-ext 1)
           Address    0008.205e.6600
           Hello Time 2 sec  Max Age 20 sec  Forward Delay 15 sec
           Aging Time 300

Interface    Role Sts Cost      Prio.Nbr Type
-----
Fa0/1        Root FWD 19        128.1   P2p
Fa0/4        Desg FWD 38        128.1   P2p
Fa0/11       Altn BLK 57        128.1   P2p
Fa0/13       Desg FWD 38        128.1   P2p
```

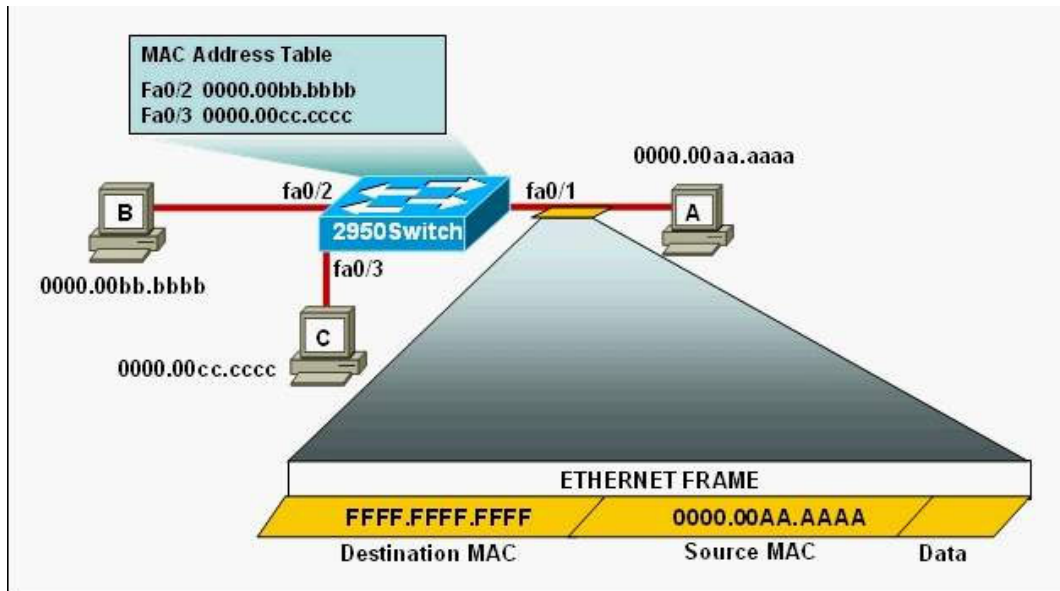
Why has this switch not been elected the root bridge for VLAN1?

- A. It has more than one interface that is connected to the root network segment.
- B. It is running RSTP while the elected root bridge is running 802.1d spanning tree.
- C. It has a higher MAC address than the elected root bridge.
- D. It has a higher bridge ID than the elected root bridge.

Answer: D

Explanation:**QUESTION NO: 5**

Refer to the exhibit.



The following commands are executed on interface fa0/1 of 2950Switch.

```
2950Switch(config-if)# switchport port-security
```

```
2950Switch(config-if)# switchport port-security mac-address sticky
```

```
2950Switch(config-if)# switchport port-security maximum 1
```

The Ethernet frame that is shown arrives on interface fa0/1.

What two functions will occur when this frame is received by 2950Switch? (Choose two.)

- A. The MAC address table will now have an additional entry of fa0/1 FFFF.FFFF.FFFF.
- B. Only host A will be allowed to transmit frames on fa0/1.
- C. This frame will be discarded when it is received by 2950Switch.
- D. All frames arriving on 2950Switch with a destination of 0000.00aa.aaaa will be forwarded out fa0/1.
- E. Hosts B and C may forward frames out fa0/1 but frames arriving from other switches will not be forwarded out fa0/1.
- F. Only frames from source 0000.00bb.bbbb, the first learned MAC address of 2950Switch, will be forwarded out fa0/1.

Answer: B,D

Explanation:

QUESTION NO: 6

Which two of these statements regarding RSTP are correct? (Choose two.)

- A. RSTP cannot operate with PVST+.
- B. RSTP defines new port roles.
- C. RSTP defines no new port states.
- D. RSTP is a proprietary implementation of IEEE 802.1D STP.
- E. RSTP is compatible with the original IEEE 802.1D STP.

Answer: B,E

Explanation:

QUESTION NO: 7

Refer to exhibit.

```

Current configuration : 659 bytes
!
version 12.4
no service timestamps log datetime msec
no service timestamps debug datetime msec
service password-encryption
!
hostname Router
!

enable secret 5 $1$MERr$hx5rvt7rPN0S4wqbxxx7m0
!

interface FastEthernet0/0
 ip address 192.168.1.1 255.255.255.0
 ip access-group 101 in
 duplex auto
 speed auto
!
access-list 101 deny tcp any any eq 22
access-list 101 permit ip any any
!
line con 0
 password 7 082245500A16
 login
line vty 0 4
 login
line vty 5 14
 login
!
end

```

A network administrator cannot establish a Telnet session with the indicated router. What is the cause of this failure?

- A. A Level 5 password is not set.
- B. An ACL is blocking Telnet access.
- C. The vty password is missing.
- D. The console password is missing.

Answer: C

Explanation:

QUESTION NO: 8

A network administrator needs to configure port security on a switch. Which two statements are true? (Choose two.)

- A. The network administrator can apply port security to dynamic access ports.
- B. The network administrator can apply port security to EtherChannels.
- C. When dynamic MAC address learning is enabled on an interface, the switch can learn new addresses, up to the maximum defined.
- D. The sticky learning feature allows the addition of dynamically learned addresses to the running configuration.
- E. The network administrator can configure static secure or sticky secure MAC addresses in the voice VLAN.

Answer: C,D

Explanation:

QUESTION NO: 9

What are two characteristics of a switch that is configured as a VTP client? (Choose two.)

- A. If a switch that is configured to operate in client mode cannot access a VTP server, then the switch reverts to transparent mode.
- B. On switches that are configured to operate in client mode, VLANs can be created, deleted, or renamed locally.
- C. The local VLAN configuration is updated only when an update that has a higher configuration revision number is received.
- D. VTP advertisements are not forwarded to neighboring switches that are configured in VTP transparent mode.
- E. VTP client is the default VTP mode.
- F. When switches in VTP client mode are rebooted, they send a VTP advertisement request to the VTP servers.

Answer: C,F

Explanation:

QUESTION NO: 10

At which layer of the OSI model is RSTP used to prevent loops?

- A. physical
- B. data link

- C. network
- D. transport

Answer: B

Explanation: