



156-915. 1

Accelerated CCSE 1.1 NGX

Q&A

DEMO Version

Copyright (c) 2007 Chinatag LLC. All rights reserved.

Important Note Please Read Carefully

For demonstration purpose only, this free version Chinatag study guide contains **10** full length questions selected from our full version products which have more than **200** questions each.

This Study guide has been carefully written and compiled by Chinatag certification experts. It is designed to help you learn the concepts behind the questions rather than be a strict memorization tool. Repeated readings will increase your comprehension.

For promotion purposes, all PDF files are **not** encrypted. Feel free to distribute copies among your friends and let them know Chinatag website.

Study Tips

This product will provide you questions and answers along with detailed explanations carefully compiled and written by our experts. Try to understand the concepts behind the questions instead of cramming the questions. Go through the entire document at least twice so that you make sure that you are not missing anything.

Latest Version

We are constantly reviewing our products. New material is added and old material is revised. Free updates are available for 90 days after the purchase. You should check the products page on the <http://www.chinatag.com> website for an update 3-4 days before the scheduled exam date.

Please tell us what you think of our products. We appreciate both positive and critical comments as your feedback helps us improve future versions. Feedback on specific questions should be send to feedback@chinatag.com.

Thanks for purchasing our products and look forward to supplying you with all your Certification training needs.

Good studying!

Technical and Support Team
Chinatag LLC.

Question No: 1 When restoring NGX using the upgrade_import command, which of the following items are NOT restored?

- A. Security Policies
- B. Global properties
- C. Licenses
- D. User groups
- E. Route tables

Answer: E

Question No: 2 Your organization has many VPN-1 Edge gateways at various branch offices, to allow VPN-1 SecureClient users to access company resources. For security reasons, your organization's Security Policy requires all Internet traffic initiated behind the VPN-1 Edge gateways first be inspected by your headquarters' VPN-1 Pro Security Gateway. How do you configure VPN routing in this star VPN Community?

- A. To the Internet and other targets only
- B. To the center and other satellites, through the center
- C. To the center only
- D. To the center, or through the center to other satellites, then to the Internet and other VPN targets

Answer: D

Question No: 3 Your organization's security infrastructure separates Security Gateways geographically. You must request a central license for one remote Security Gateway. How would you request and apply the license? Request a central license:

- A. using the remote Gateway's IP address. Apply the license locally with the cplic put command.
- B. for the Gateways' IP address. Apply the license on the SmartCenter Server with the cprlic put command.
- C. using the remote Gateway's IP address. Attach the license to the remote Gateway via SmartUpdate.
- D. using your SmartCenter Server's IP address. Attach the license to the remote Gateway via SmartUpdate.
- E. using the SmartCenter Server's IP address. Apply the license locally on the remote Gateway with the cplic put command.

Answer: D

Question No: 4 Your VPN Community includes three Security Gateways. Each Gateway has its own internal network defined as a VPN Domain. You must test the VPN-1 NGX route-based VPN feature, without stopping the VPN. What is the correct order of steps?

- A. 1.Add a new interface on each Gateway. 2.Remove the newly added network from the current VPN Domain for each Gateway. 3.Create VTIs on each Gateway, to point to the other two peers 4.Enable advanced routing on all three Gateways.
- B. 1.Add a new interface on each Gateway. 2.Remove the newly added network from the current VPN Domain in each gateway object. 3.Create VPN Tunnel Interfaces (VTI) on each gateway object, to point to the other two peers. 4.Add static routes on three Gateways, to route the new network to each peer"s VTI interface.
- C. 1.Add a new interface on each Gateway. 2.Add the newly added network into the existing VPN Domain for each Gateway. 3.Create VTIs on each gateway object, to point to the other two peers. 4.Enable advanced routing on all three Gateways.
- D. 1.Add a new interface on each Gateway. 2.Add the newly added network into the existing VPN Domain for each gateway object. 3.Create VTIs on each gateway object, to point to the other two peers. 4.Add static routes on three Gateways, to route the new networks to each peer's VTI interface.

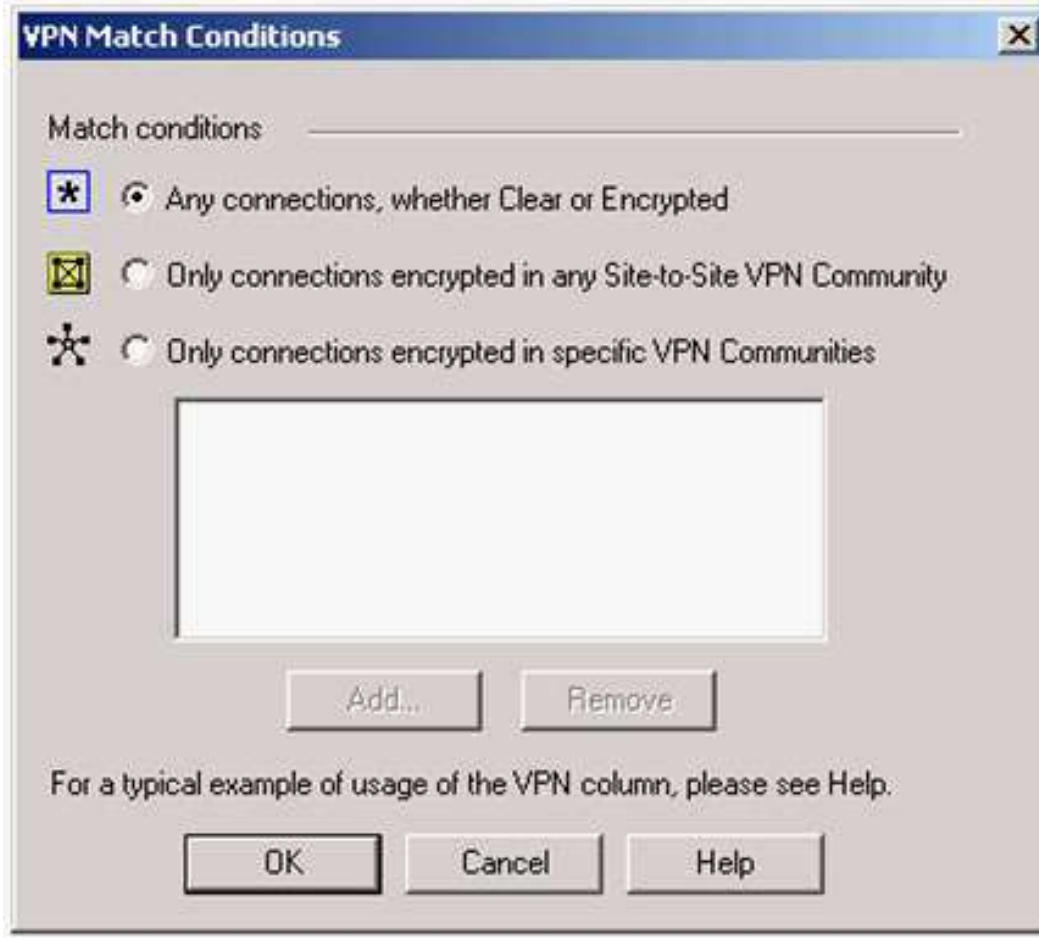
Answer: B

Question No: 5 Eric wants to see all URLs' full destination paths in the SmartView Tracker logs, not just the fully qualified domain name of the Web servers. For example, the information filed of a log entry displays the URL <http://hp.msn.com/css/home/hpcl1012.css>. How can Eric best customize SmartView Tracker to see the logs he wants? Configure the URI resource, and select:

- A. "transparent" as the connection method
- B. "tunneling" as the connection method
- C. "optimize URL logging"; use the URI resource in the rule, with action "accept"
- D. "Enforce URL capability"; use the URI resource in the rule, with action "accept"

Answer: C

Question No: 6 Steve tries to configure Directional VPN Rule Match in the Rule Base. But the Match column does not have the option to see the Directional Match. Steve sees the following screen. What is the problem?



- A. Steve must enable `directional_match(true)` in the `objectes_5_0.C` file on SmartCenter Server.
- B. Steve must enable Advanced Routing on each Security Gateway.
- C. Steve must enable VPN Directional Match on the VPN Advanced screen, in Global properties.
- D. Steve must enable a dynamic-routing protocol, such as OSPF, on the Gateways.
- E. Steve must enable VPN Directional Match on the gateway object's VPN tab.

Answer: C

Question No: 7 In a Management High Availability (HA) configuration, you can configure synchronization to occur automatically, when:

1. The Security Policy is installed.
2. The Security Policy is saved.
3. The Security Administrator logs in to the secondary SmartCenter Server, and changes its status to active.
4. A scheduled event occurs.

5. The user database is installed. Select the BEST response for the synchronization sequence. Choose one.

- A. 1,2,3
- B. 1,2,3,4
- C. 1,3,4
- D. 1,2,5
- E. 1,2,4

Answer: E

Question No: 8 After importing the NGX schema into an LDAP server, what should you enable? Schema checking

- A. Encryption
- B. UserAuthority
- C. ConnectControl
- D. Secure Internal Communications

Answer: A

Question No: 9 What is the command to see the licenses of the Security Gateway FWDALLAS from your SmartCenter Server?

- A. cprlic print FWDALLAS
- B. fw licprint FWDALLAS
- C. fw tab -t fwlic FWDALLAS
- D. cplic print FWDALLAS
- E. fw lic print FWDALLAS

Answer: A

Question No: 10 How can you unlock an administrator's account, which was been locked due to SmartCenter Access settings in Global Properties?

- A. Type `fwm lock_admin -ua` from the command line of the SmartCenter Server.
- B. Clear the "locked" box of the user's General Properties in SmartDashboard.
- C. Type `fwm unlock_admin -ua` from the command line of the SmartCenter Server

- D. Type `fwm unlock_admin -ua` from the command line of the Security Gateway.
- E. Delete the file `admin.lock` in the `$FWDIR/tmp/` directory of the SmartCenter Server.

Answer: A