



132-S-916.2

Avaya Specialist - IP Office Implement & Support Elective Exam

Q&A

DEMO Version

Copyright (c) 2007 Chinatag LLC. All rights reserved.

Important Note Please Read Carefully

For demonstration purpose only, this free version Chinatag study guide contains **10** full length questions selected from our full version products which have more than **200** questions each.

This Study guide has been carefully written and compiled by Chinatag certification experts. It is designed to help you learn the concepts behind the questions rather than be a strict memorization tool. Repeated readings will increase your comprehension.

For promotion purposes, all PDF files are **not** encrypted. Feel free to distribute copies among your friends and let them know Chinatag website.

Study Tips

This product will provide you questions and answers along with detailed explanations carefully compiled and written by our experts. Try to understand the concepts behind the questions instead of cramming the questions. Go through the entire document at least twice so that you make sure that you are not missing anything.

Latest Version

We are constantly reviewing our products. New material is added and old material is revised. Free updates are available for 90 days after the purchase. You should check the products page on the <http://www.chinatag.com> website for an update 3-4 days before the scheduled exam date.

Please tell us what you think of our products. We appreciate both positive and critical comments as your feedback helps us improve future versions. Feedback on specific questions should be send to feedback@chinatag.com.

Thanks for purchasing our products and look forward to supplying you with all your Certification training needs.

Good studying!

Technical and Support Team
Chinatag LLC.

Question: 1

Which three options does the IMS user have available in Microsoft?Outlook? (Choose three.)

- A. Select IMS server.
- B. Select Voicemail Box.
- C. Select Voicemail server.
- D. Select handset for VM playback.
- E. Prompt before connecting to server.

Answer: B, D, E

Question: 2

An IP Office telephone user reports that a phone is not ringing for outside calls. What are three possible reasons why this is happening? (Choose three.)

- A. The IP Office locale is set to "A-Law".
- B. The phone does not have the user profile logged onto the phone.
- C. The ring volume is too low to hear.
- D. The phone has been set to "Offhook Station".
- E. The phone is set to "Do Not Disturb".

Answer: B, C, E

Question: 3

When configuring Session Initiated Protocol (SIP) trunks with SIP authorization using an IP address on an IP Office system which option must be set in the SIP Line configuration form for the trunks to function correctly?

- A. The customer's NAT IP address must be entered on the SIP line form.
- B. The Primary Authentication Name must be set.
- C. The compression mode must be set to automatic.
- D. The ITSP IP address must be entered on the SIP line form.

Answer: D

Question: 4

When installing IP Hardphones, the engineer wants to use the IEEE 802.3af standard to _____.

- A. Supply AC voltage to the IP Office
- B. Supply power to the IP Hardphones
- C. Perform Layer 3 routing for IP Hardphones
- D. Filter multicast traffic to the appropriate IP Hardphone

Answer: B

Question: 5

Recordings take up how much space on a hard drive?

- A. 2MB per minute
- B. 200KB per minute
- C. 1MB per minute
- D. 650KB per minute

Answer: C

Question: 6

Which three pieces of information does System Status Application provide? (Choose three.)

- A. Configuration errors
- B. Local IP Office license status
- C. Trunk status
- D. Extension status
- E. Remote IP Office license status

Answer: B, C, D

Question: 7

A customer wants to have a simple conference bridge with four permanent bridges set up off of a menu in VoiceMail Pro. The customer also wants each bridge protected with a different static PIN. Where in the setup of this scenario would you enter the PIN?

- A. On the General tab in the menu action
- B. On the General tab for each transfer action
- C. On the Telephone Number field in the IP Office Short Code
- D. In the Properties box for each option in the Touch Tone tab in the menu action

Answer: B

Question: 8

Which Dynamic Host Configuration Protocol (DHCP) options are available in the IP Office?

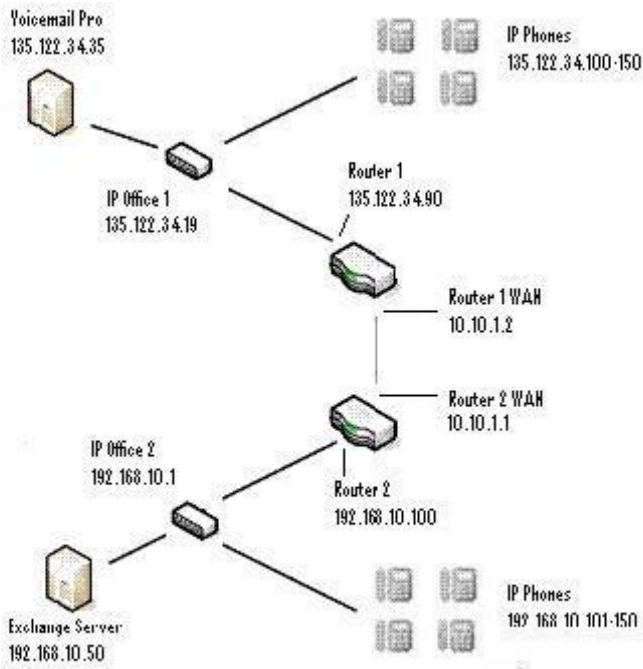
- A. Disabled, Enabled
- B. Server, Enabled, Client
- C. Server, Disabled, Client, DialIn
- D. Server, Client, Disabled

Answer: C

Question: 9

Click the Exhibit button.

In the exhibit, what would the default gateway for IP Office 1 be?



- A. 10.10.1.1
- B. 10.10.1.2
- C. 192.168.10.100
- D. 135.122.34.90

Answer: D

Question: 10

Which file validates the version of software that is to be loaded into the 4600 Series Telephone set?

- A. bbla0_83.scr
- B. 46xxsettings.txt
- C. 46xxsettings.scr
- D. 46xxupgrade.scr

Answer: D